

Figure/Figures

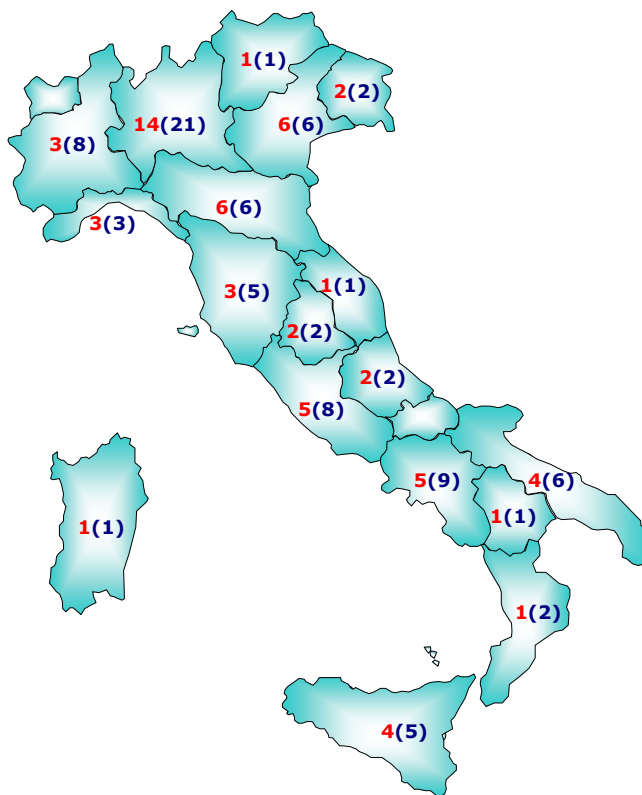


Figura 1. Distribuzione dei Centri di Cardiocirurgia nelle Regioni italiane (in rosso è indicato il numero di Centri inclusi nel database analitico; in blu e in parentesi il numero di Centri censiti) / *Distribution of Cardiac Surgery Centers in the Italian Regions (the number of Centers included in the analytic database is indicated in red; the total number of recognized Centers is indicated in blue and reported in brackets).*

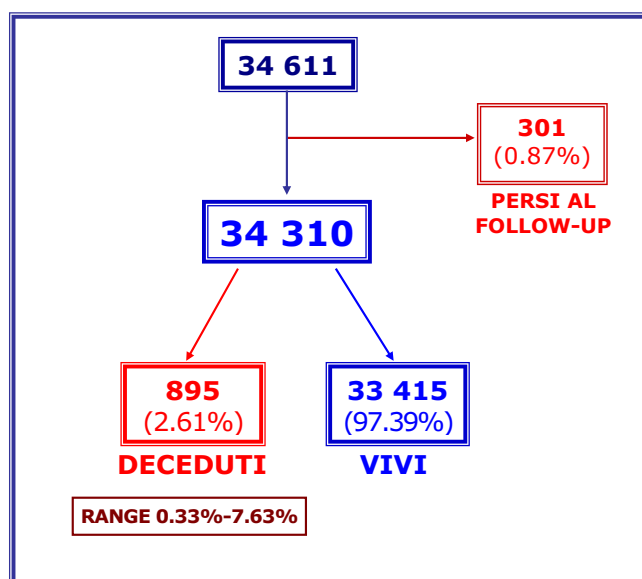


Figura 2. Interventi di bypass aortocoronarico isolato effettuati nei 64 Centri conformi ai criteri di inclusione nel database analitico / *Isolated coronary artery bypass graft procedures performed in the 64 Centers included in the analytical database.*

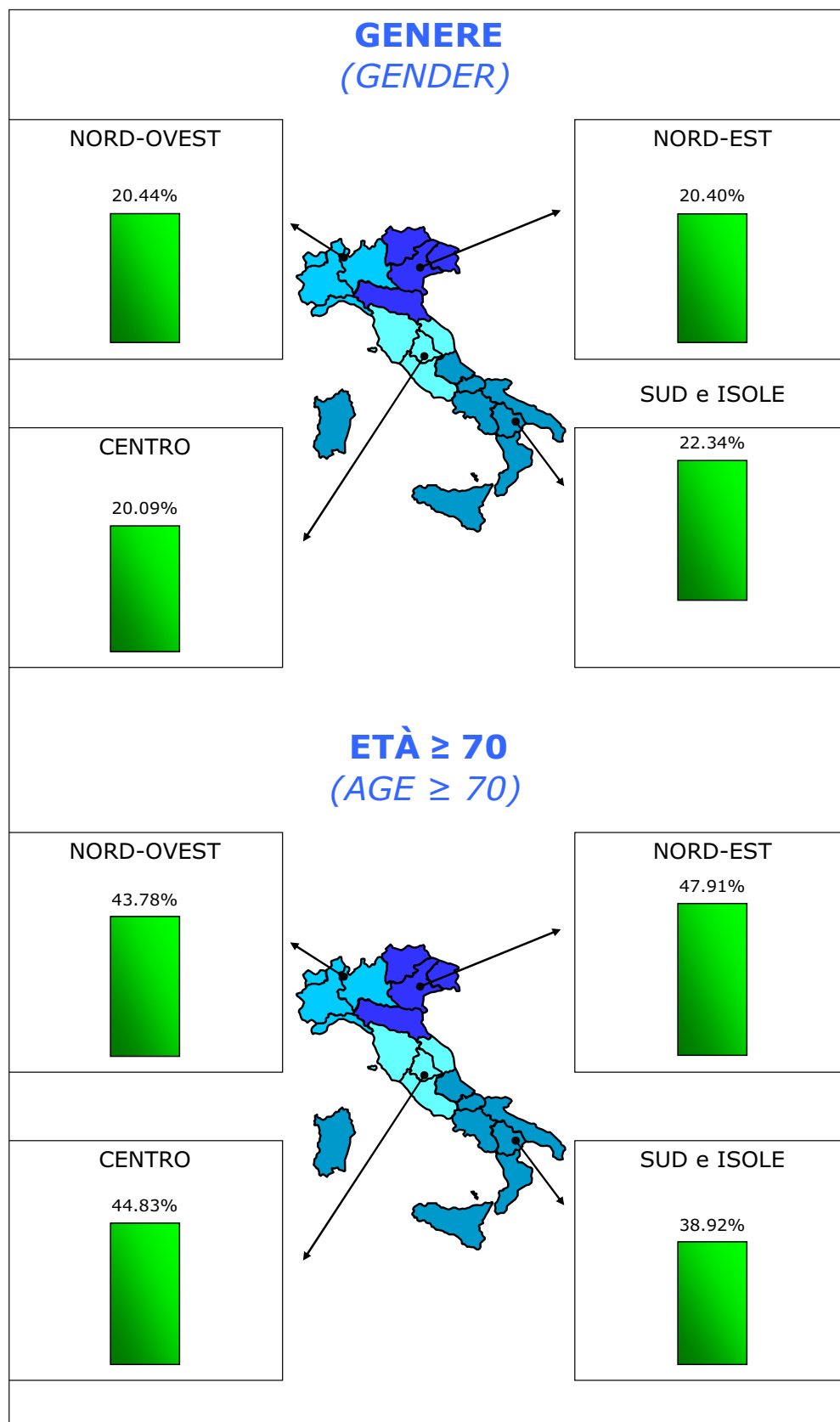
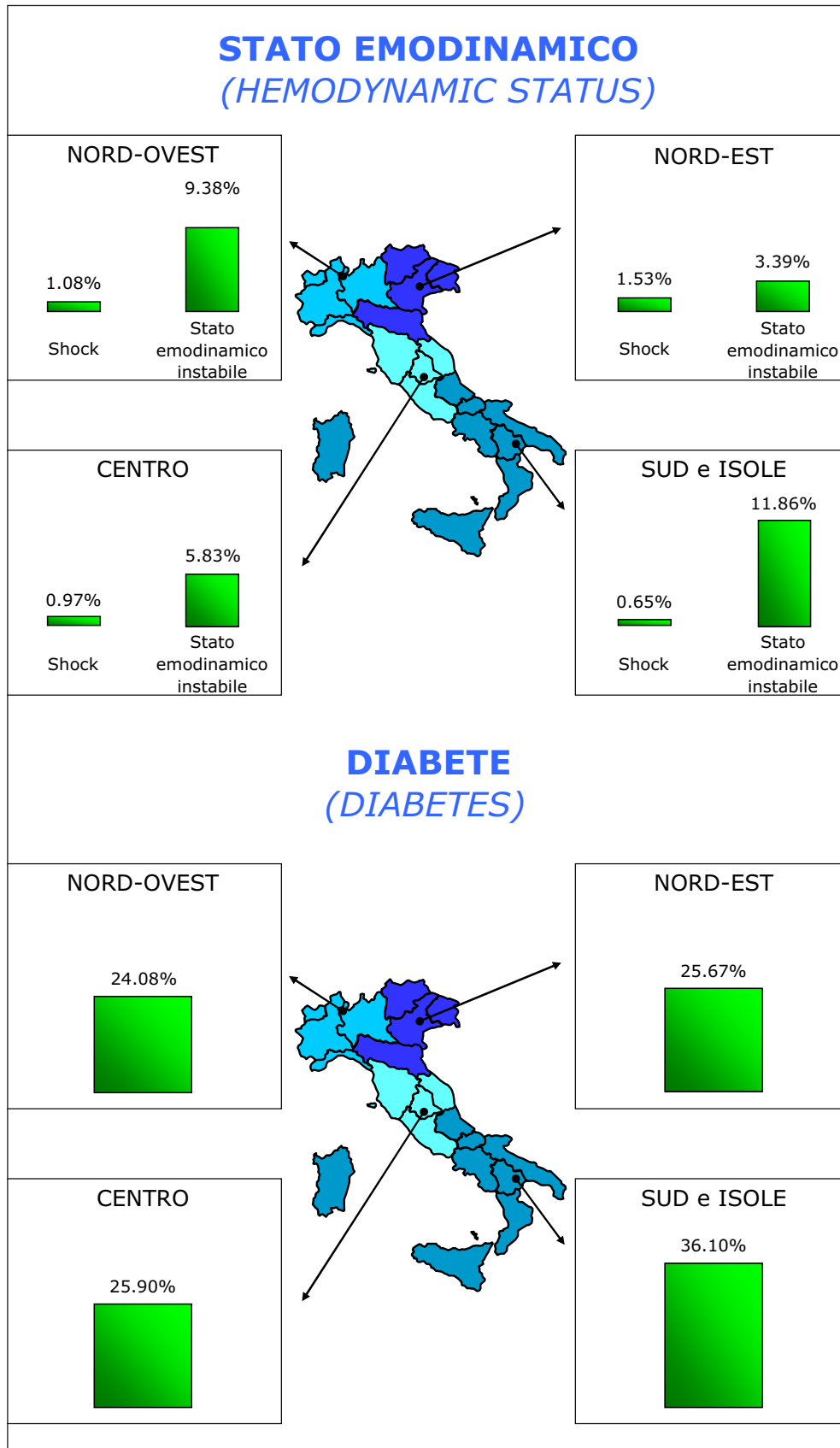


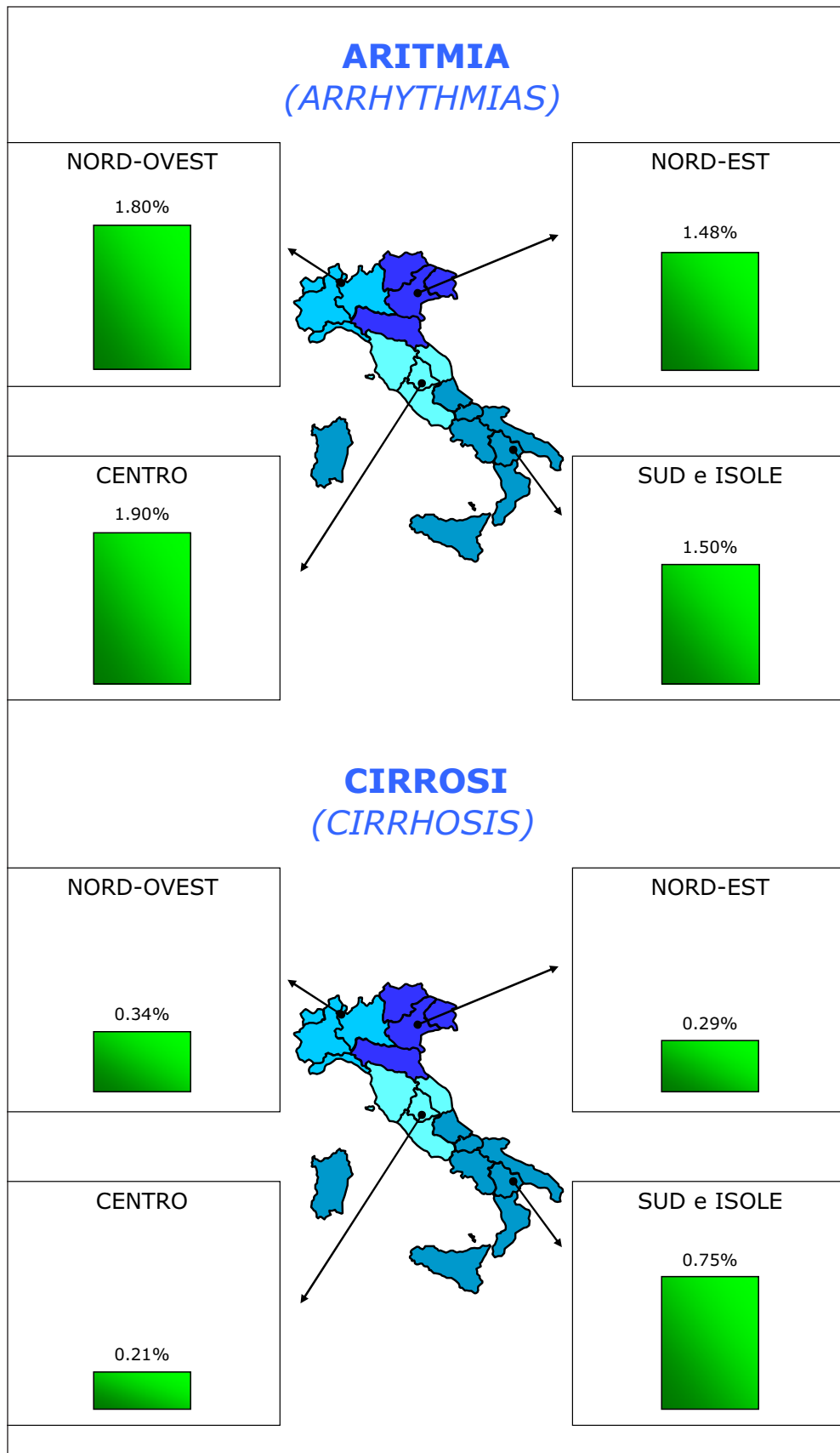
Figura 3. Distribuzione dei fattori di rischio preoperatori in pazienti sottoposti a bypass aortocoronarico isolato. Descrizione per macroaree geografiche / *Distribution of preoperative risk factors in patients undergoing isolated coronary artery bypass graft surgery. Description by geographical macroareas.*

Numero di interventi: Nord-Ovest n = 10 341; Nord-Est n = 8557; Centro n = 6298; Sud e Isole n = 9114 / *Number of interventions: North-West n = 10 341; North-East n = 8557; Center n = 6298; South and Islands n = 9114.*

3.1 Genere ed età / *Gender and age.*

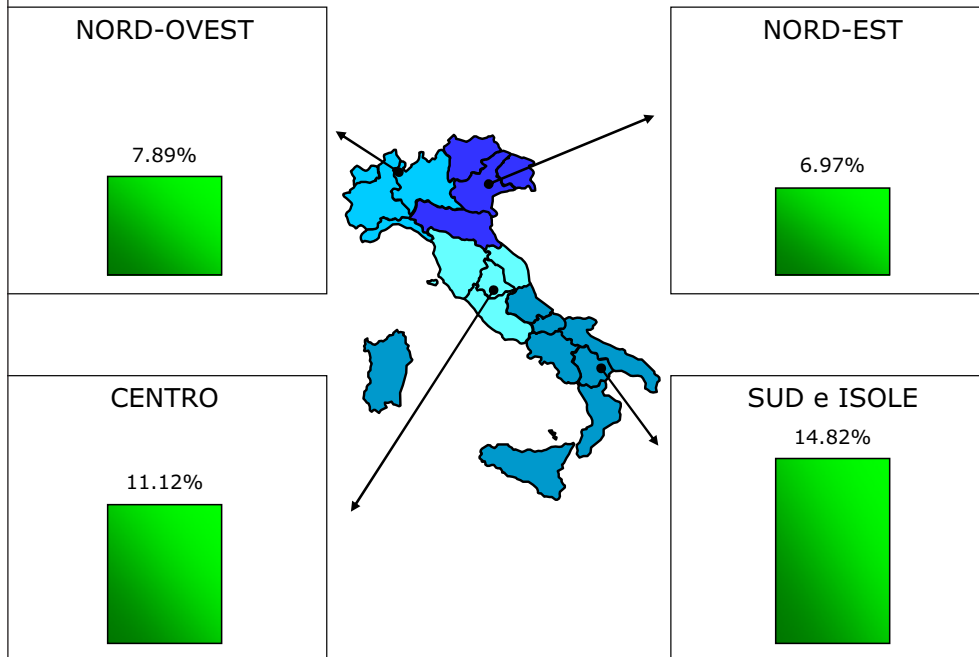


3.2 Stato emodinamico (shock e instabile) e diabete / Hemodynamic status (shock and unstable) and diabetes.

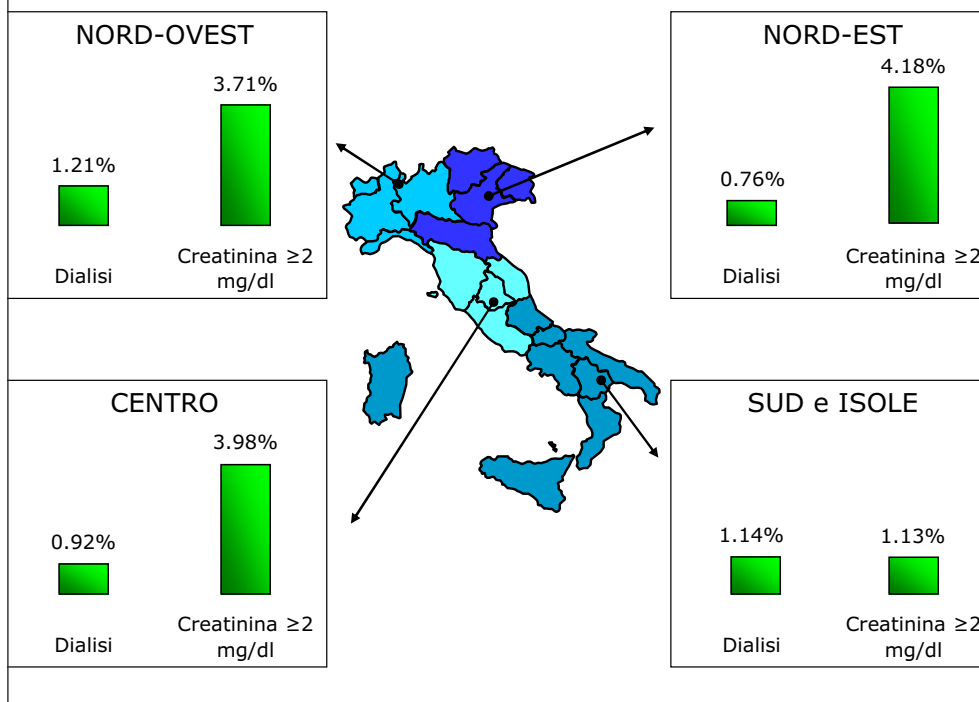


3.3 Aritmia (aritmia ventricolare maligna) e cirrosi / Arrhythmias (malignant ventricular arrhythmias) and cirrhosis.

MALATTIA POLMONARE (PULMONARY DISEASE)

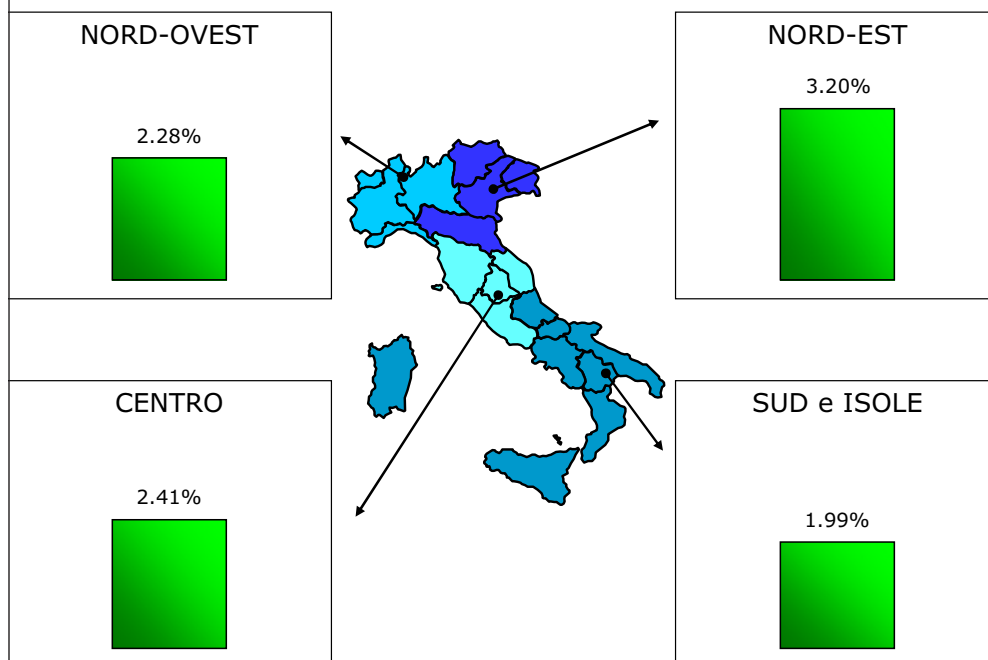


INSUFFICIENZA RENALE (RENAL FAILURE)

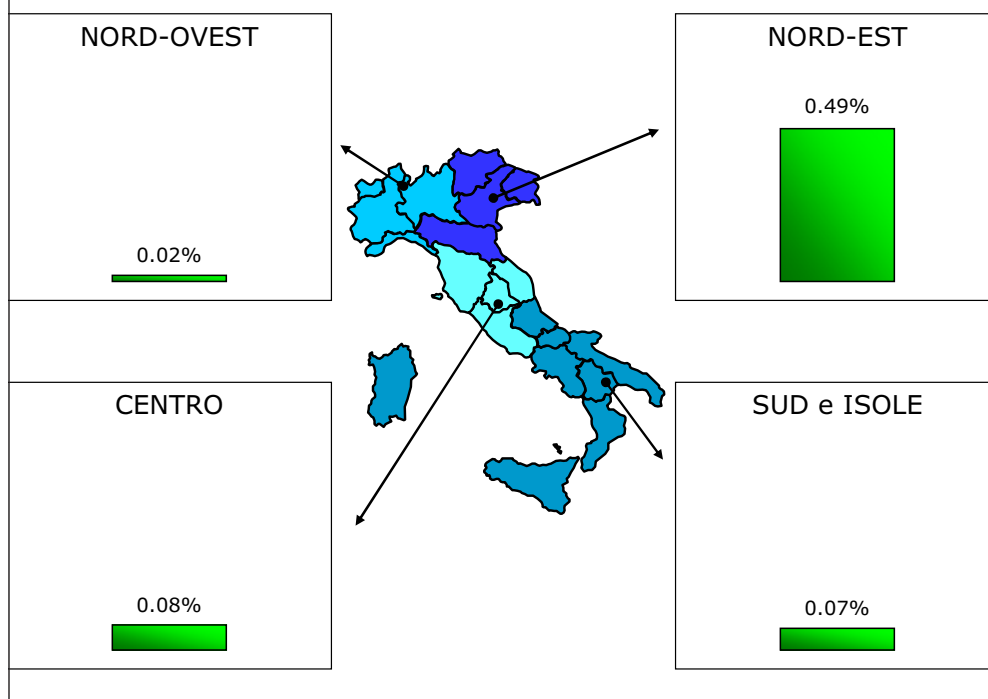


3.4 Malattia polmonare (malattia polmonare cronico-ostruttiva) e insufficienza renale (dialisi e creatinina ≥ 2 mg/dl preoperatoria) / *Pulmonary disease (chronic obstructive pulmonary disease) and renal failure (dialysis or preoperative creatinine ≥ 2 mg/dl).*

DISFUNZIONE NEUROLOGICA (NEUROLOGICAL DYSFUNCTION)

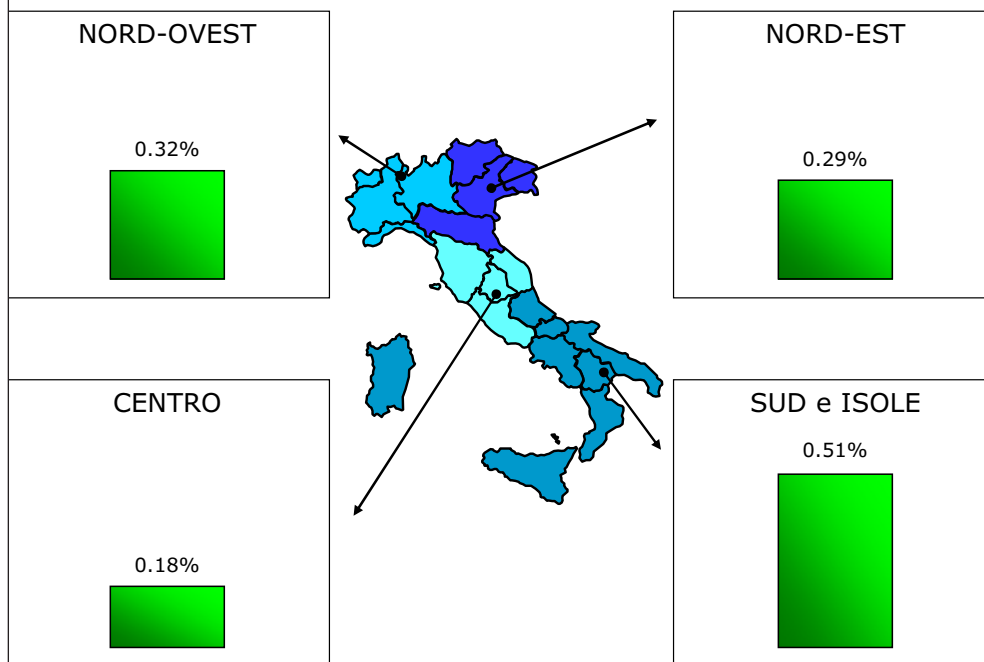


ENDOCARDITE ATTIVA (ACTIVE ENDOCARDITIS)

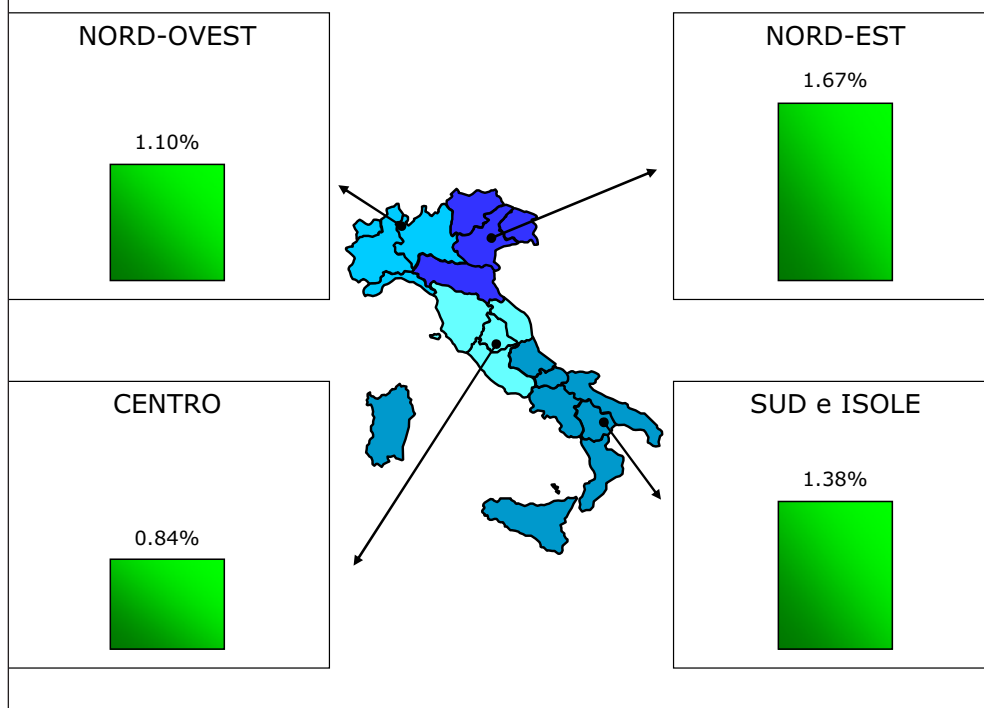


3.5 Disfunzione neurologica ed endocardite infettiva / Neurological dysfunction and active endocarditis.

IPERTENSIONE POLMONARE (PULMONARY HYPERTENSION)

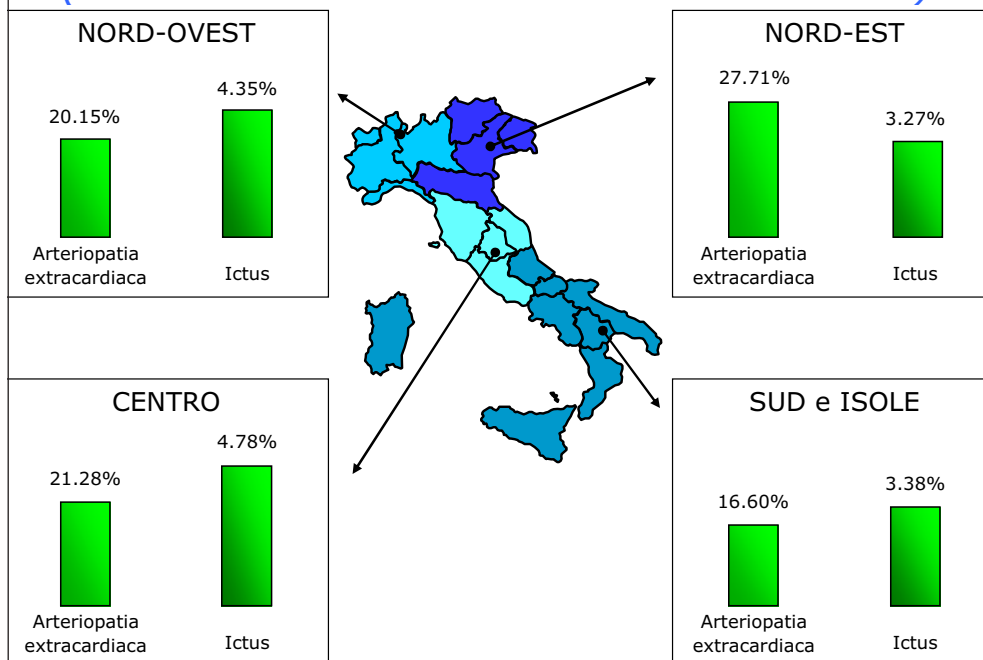


TUMORE (CANCER)

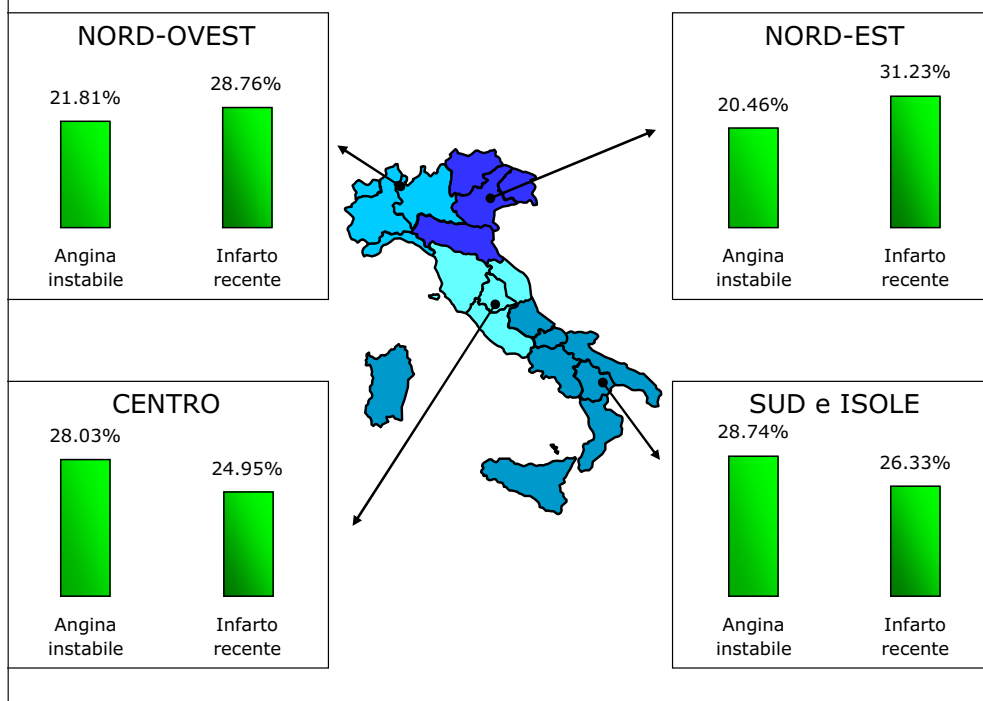


3.6 Ipertensione polmonare e tumore / *Pulmonary hypertension and cancer.*

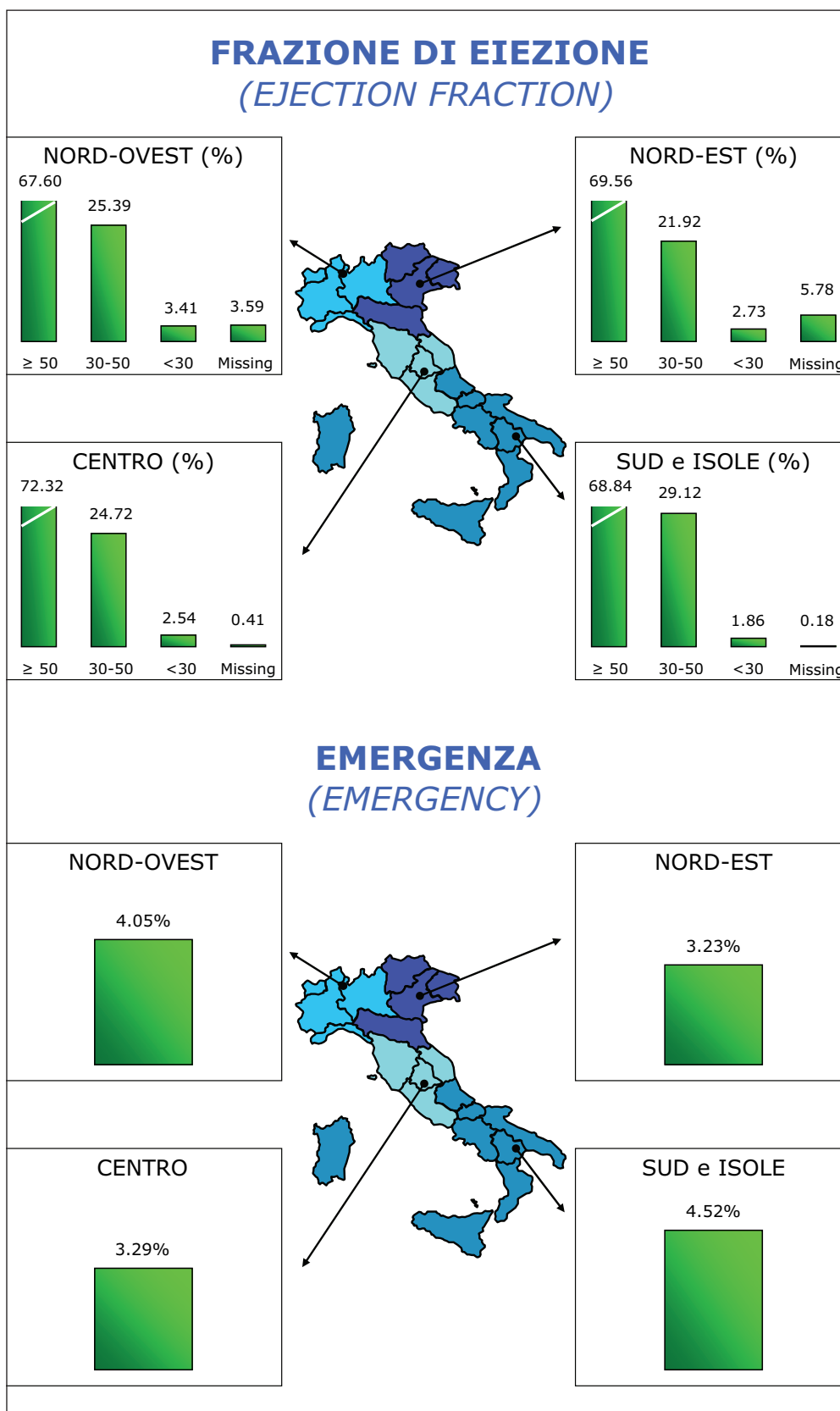
ARTERIOPATIA EXTRACARDIACA - ICTUS (EXTRACARDIAC ARTERIOPATHY - STROKE)



ANGINA INSTABILE - INFARTO RECENTE (UNSTABLE ANGINA - RECENT INFARCTION)

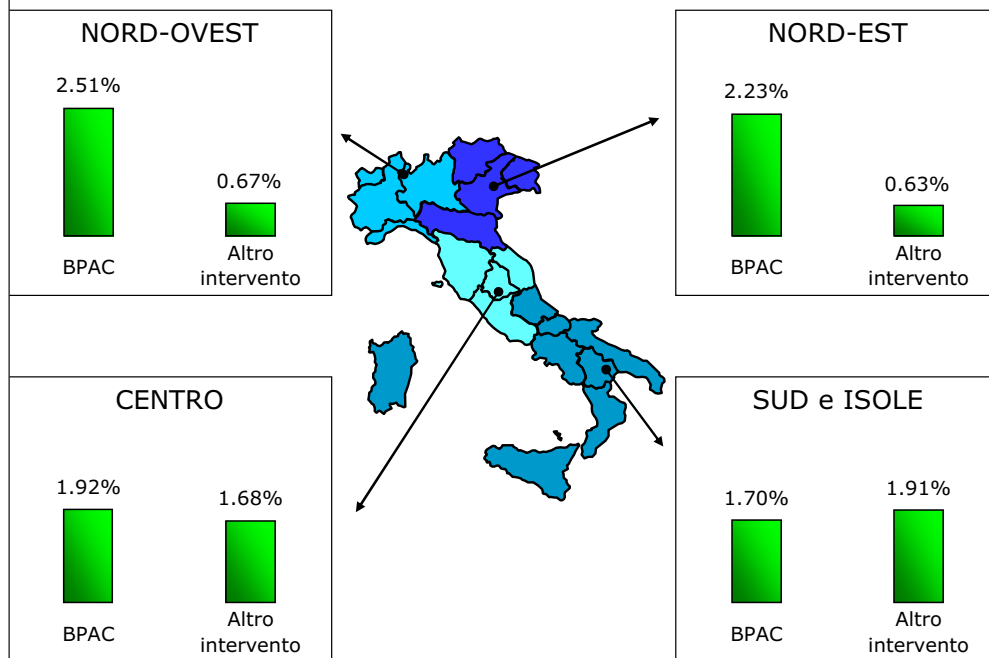


3.7 Arteriopatia extracardiaca e ictus, angina instabile e infarto recente (< 90 giorni) / Extracardiac arteriopathy and stroke, unstable angina and recent myocardial infarction (< 90 days).

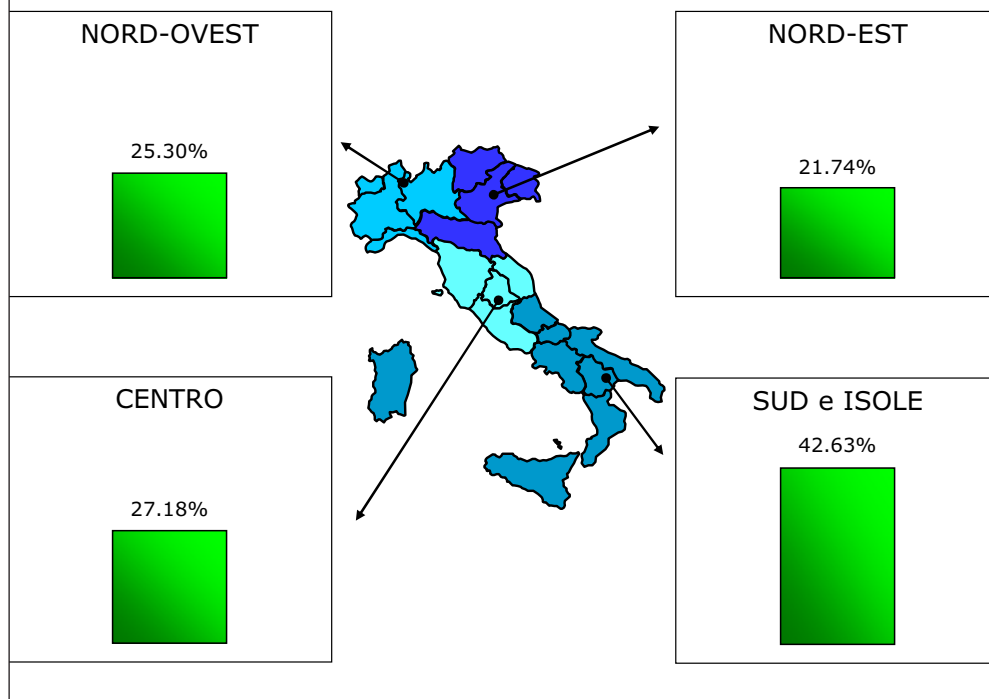


3.8 Frazione di eiezione ed emergenza / Ejection fraction and emergency.

PRECEDENTE INTERVENTO CARDIACO (PREVIOUS CARDIAC SURGERY)



CIRCOLAZIONE EXTRACORPOREA (ON-PUMP OR OFF-PUMP CIRCULATION)



3.9 Precedente intervento cardiaco con apertura del pericardio (bypass aortocoronarico e altro intervento) e circolazione extracorporea / *Previous cardiac surgery of pericardial opening (coronary artery bypass graft or any other interventions) and on-pump or off-pump circulation.*

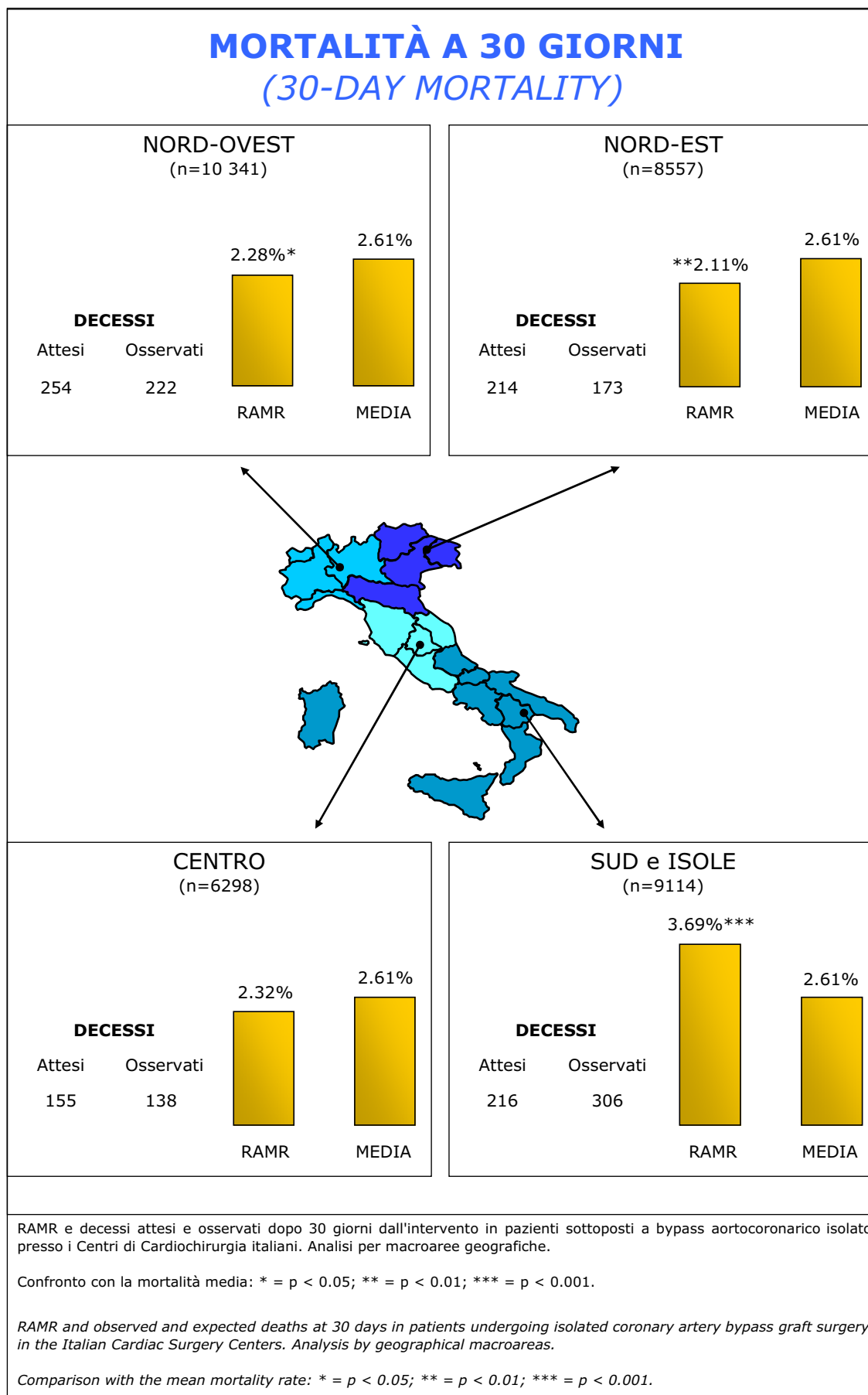


Figura 4. Mortalità a 30 giorni / *Thirty-day mortality.*

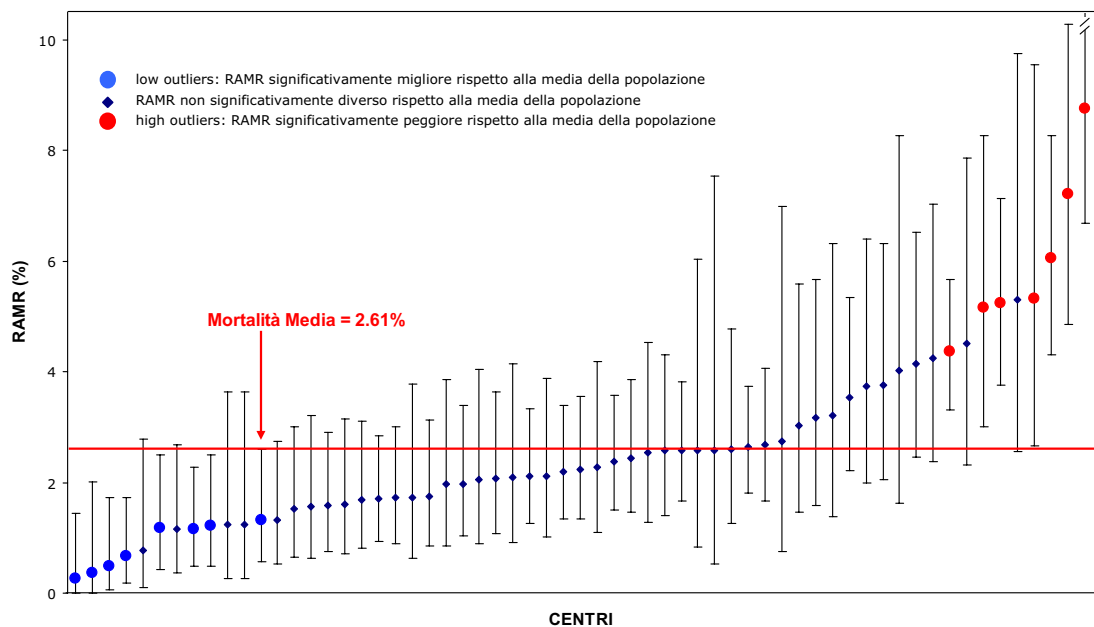


Figura 5. Mortalità aggiustata (RAMR) per Centro di Cardiocirurgia e intervalli di confidenza al 95% (barre verticali) / Risk adjusted mortality rates for each Cardiac Surgery Center and their 95% confidence intervals (vertical bars).

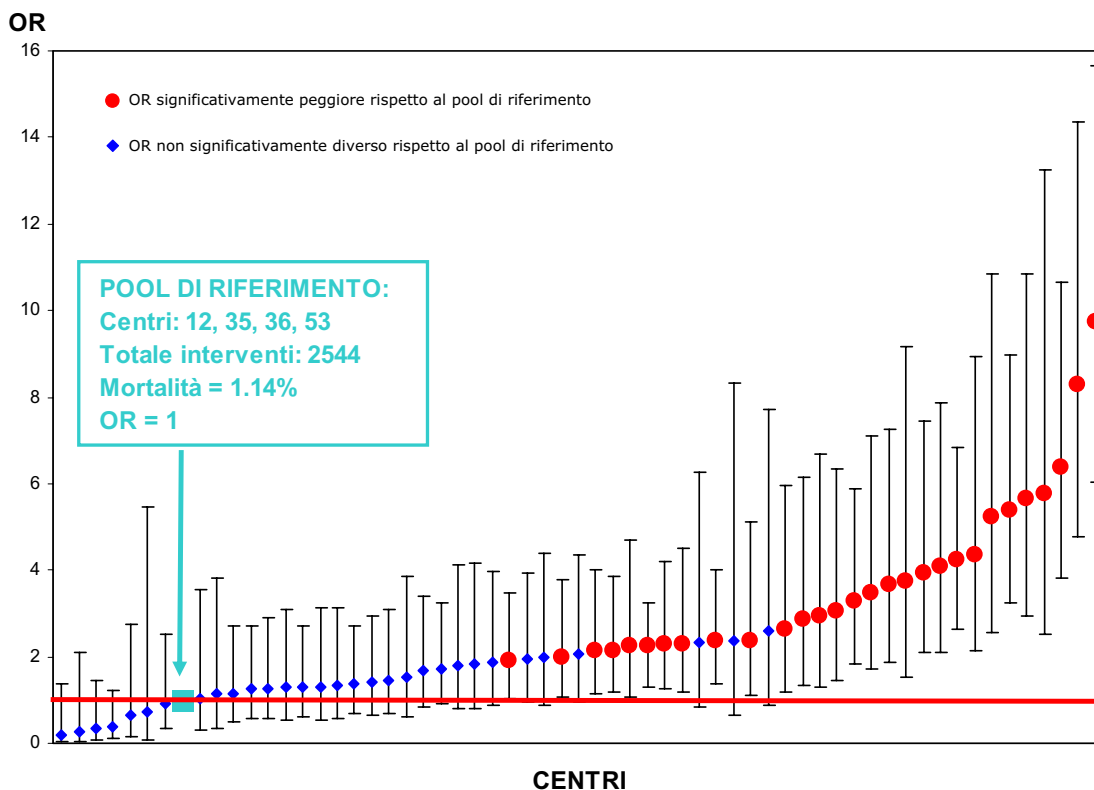


Figura 6. Eccesso di rischio (OR) per ciascun Centro di Cardiocirurgia rispetto al pool di riferimento / Odds ratios for each Cardiac Surgery Center as compared to the reference pool.

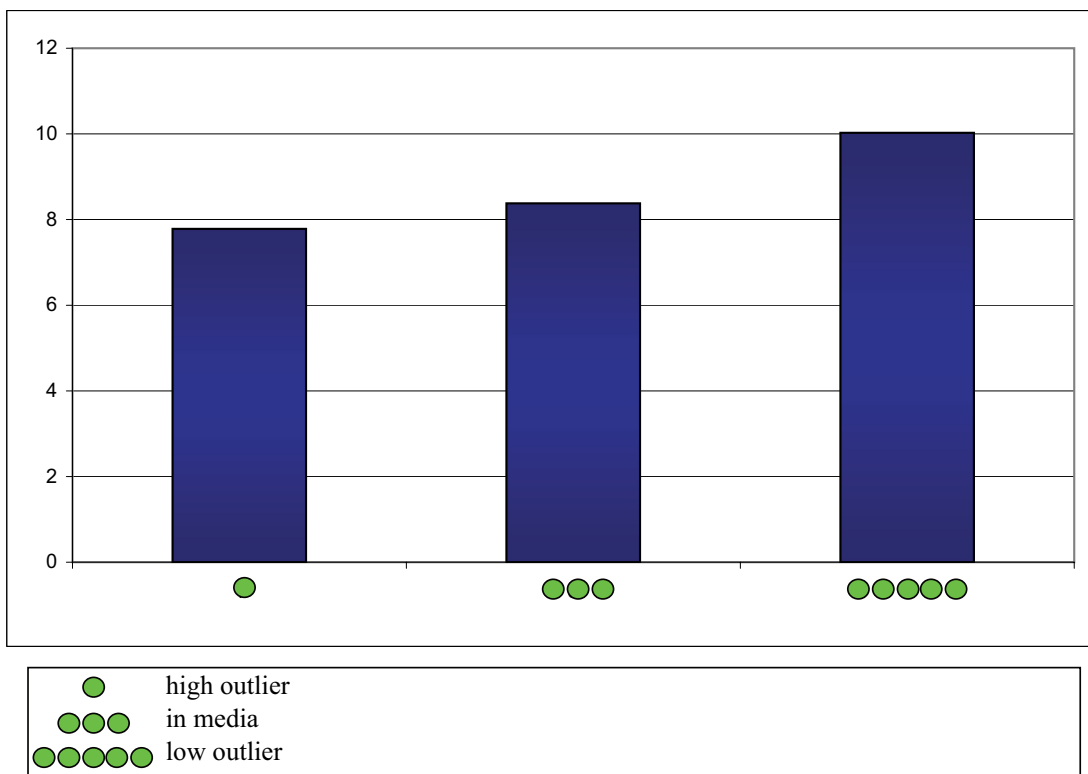


Figura 7. Giorni di sopravvivenza nei deceduti per categorie di performance / *Surviving days for dead patients by performance categories.*